

Coats® Signal™ Dark Grey Reflective Tape

Coats® Signal™ Dark Grey retro-reflective tapes are designed for tough industrial washing requirements. The dark grey colour looks more integrated in particular in combination with darker fabrics which can help to make the garment design more stylish. The retro-reflective material is less visible and prominent in this case. It has same high reflectivity as standard silver tapes. Coats® Signal™ C402700-00003 and C412500-00003 exceeds the requirements of key high-visibility standards such as EN ISO 20471 or ANSI/ISEA 107 to ensure maximum performance. Coats® Signal™ C412500-00003 also meets the flame and heat resistance requirements in compliance with EN 469, EN ISO 15384, and NFPA 2112 standards.

COATS
signal



REFLECTIVE TAPE

WHY CHOOSE SIGNAL™ DARK GREY REFLECTIVE TAPE?

- Unique dark grey colour for exciting workwear applications
- Same high reflectivity and performance as silver reflective tapes
- Suitable for tough industrial washings with tumble and tunnel drying
- Complies with all main standards for high-visibility garments
- Complies with all main standards of flame and heat resistance
- Certified according to Standard 100 by Oeko-Tex®

MAIN USES

- Apparel
- Sportswear and athleisure wear
- Workwear and uniforms
- PPE
- Heat and flame protective clothing for firefighters
- Heat and flame protective clothing for industrial applications



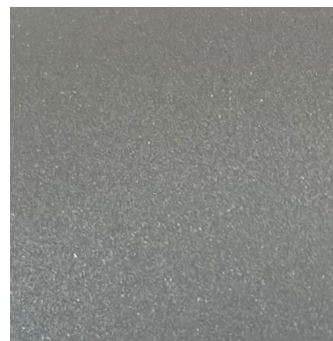
Coats® Signal™ Dark Grey Reflective Tape

TECHNICAL DATA

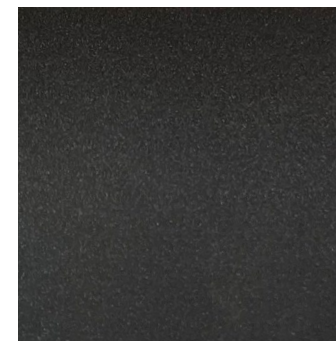
Article	C402700-00003	C412500-00003
Daytime colour	Dark grey	Dark grey
Type	Sew-on	Sew-on
Backing	Poly / Cotton	M-aramid
Retro-reflective performance (cd/lux/m²)	500	500
60°C Domestic wash ISO 6330	100	100
75°C Industrial wash ISO 15797, method 8 tumble dry and tunnel dry	50	50
Dry clean ISO 3175	50	50
EN ISO 20471	✓	✓
EN 469 / EN ISO 15384		✓
ANSI / ISEA 107	✓	✓
NFPA 2112		✓
Standard 100 by Oeko-Tex®	✓	✓
Different widths	✓	✓
Meter / Roll (50mm width)	200	100

WASH AND CARE INDUSTRIAL WASHING

- Maximum wash temperature: 75°C
- Tumble dry: 90°C
- Tunnel dry: 160°C
- Use low alkaline surfactant detergent, do not use sodium hydroxide or potassium hydroxide containing detergents, lower pH near to neutral is recommended
- Do not use solvenated surfactants
- Do not use perborate based bleaching
- Soak soap for less than 15 min.



Signal Reflective Tape



Signal Dark Grey Reflective Tape



Coats® Signal™ Dark Grey Reflective Tape

EXPERT REAL WORLD SUPPORT

The final cost of any product also includes hidden costs, fuelled by the methods and tools applied to it. Our experts know exactly how to reduce those costs, save time and increase productivity.



One to One Visits

There's no need to come to us, our experts will travel to your site. In person, online or via the phone, our trained consultants deal with the kind of issues any busy factory may face, providing a solution for today and a blueprint for future efficiency.



Training and Presentations

From product selection to solutions for common production issues, we take the learning gathered through years of hands on experience and present it in the form of high impact seminars, workshops and presentations.



Innovation Hub

Collaborate directly with expert R&D technologists at our Innovation Hub to create pioneering and tailored solutions for products ranging from Performance Materials to Apparel and Footwear. Equipped with state-of-the-art technology, we quickly turn ideas into prototype designs ready for manufacturing.

To drive your hidden costs down, talk to Coats. From thread audits in pre-production to the latest technical bulletins, we'll provide support that achieves measurable results.

For more information, talk to your Coats representative today or visit www.coats.com/signal-dark-grey



REFLECTIVE TAPE

Since conditions and applications vary considerably in the use of a product, the customer and/or user should assure themselves that the product meets end customer requirements and is suitable for the intended end use. Coats accepts no liability for unsuitable or improper use or application of products. Information provided is based on current averages and should be taken only as indicative. Coats accepts no liability for the preciseness and correctness of the information provided. Product information sheets are updated from time to time, please be sure you are referring to the most recent publication. Coats supports customers with advice on individual applications on request; if you have any questions or concerns, please contact us. © Copyright reserved 2024

